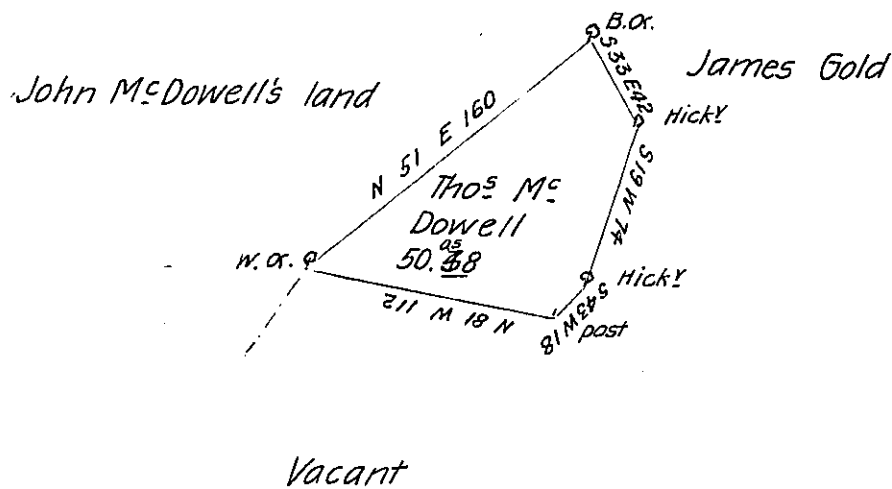


Courses & Distances

- N 51 E 160
- S 33 E 42
- S 19 W 74
- S 43 W 18
- N 81 W 112



The Draught of a tract of land situate in Armagh township Cumberland County containing fifty acres & three tenths of an acre & the usual allowance of Six Per Cent for roads &c^a Surveyed for Thomas McDowell July the 7th 1785 in pursuance of a warrant from the Honorable the Proprietaries Dated May the 30th 1770

Ja^s Harris D.S.

John Lukens Esq^r Surv^r Gen^l

Now Mifflin County

IN TESTIMONY that the above is a copy of the original remaining on file in the Department of Internal Affairs of Pennsylvania, made conformably to an Act of Assembly approved the 16th day of February, 1833, I have hereunto set my Hand and caused the Seal of said Department to be affixed at Harrisburg, this first day of December 1905

Edward Brown
Secretary of Internal Affairs.